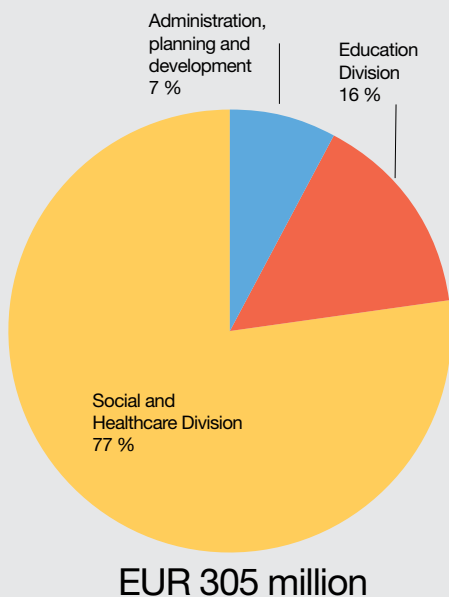
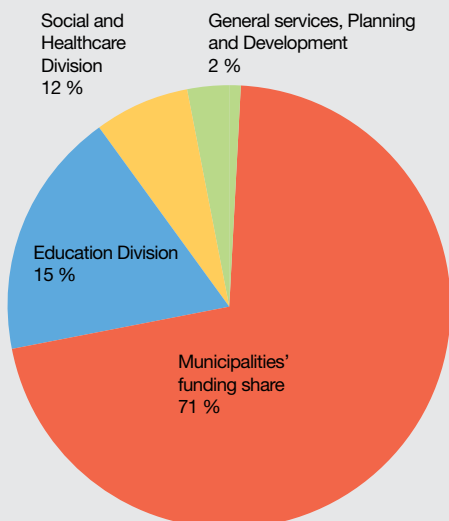


Operational expenses for each division in 2009



The annual increase of the expenses that are current handled by the Joint Authority of the Kainuu Region in 2005–2009 is in average 4.5%, compared to the previous average annual increase of 6.9% of the same expenses in Kainuu. Social and healthcare expenses in entire Finland have increased by an average of 6.0% per year in 2005–2009. The administrative experiment has clearly slowed down the increase of public expenses in Kainuu.

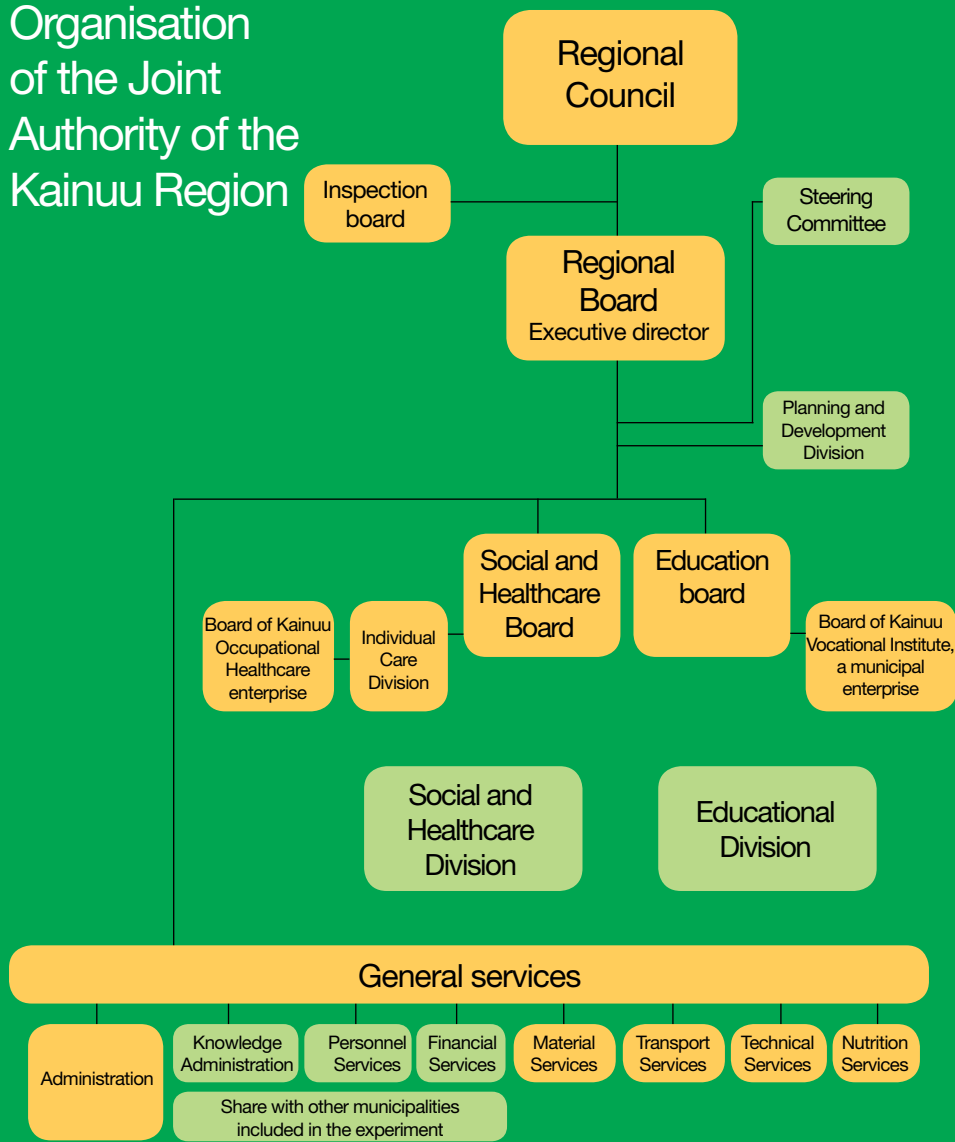
Operational profits for each division in 2009



EUR 315 million, of which the municipalities' funding share is EUR 223 million

EUR 235 million of the operational expenses (77%) are used when offering social and healthcare services, EUR 48 million (16%) is used for upper secondary level education and EUR 22 million (7%) in administrative, development and support services.

Organisation of the Joint Authority of the Kainuu Region



Finances

The region's budget for 2009 totals at EUR 315 million. Of this, the municipalities' funding share totals at EUR 223 million, 60.1% of the municipalities' tax funding. The tax funding includes tax revenue (municipal tax, community tax and real estate tax),

the general state subsidy, the Social and Healthcare Division's state subsidy, and adjustment of state subsidy based on tax revenue. The region employs approximately 3,800 people.

Joint Authority of the Kainuu Region

POSTAL ADDRESS

PO BOX 400, FI-87070 KAINUU, FINLAND

FAX:

+358 (0)8 6155 4260 / Regional Office

ACCOUNTS PAYABLE

Accounts Payable, PO BOX 401, FI-87070 KAINUU

E-MAIL

kirjaamo@kainuu.fi
forename.surname@kainuu.fi

STREET ADDRESS

Kauppakatu 1, Kajaani

www.kainuu.fi

TELEPHONE

+358 (0)8 615 541/switchboard, Region of Kainuu
+358 (0)8 615 61/switchboard, Social and Healthcare Services
+358 (0)8 616 51 / switchboard, Kainuu Vocational Institute and upper secondary school education





Kainuu Region Driving Development

The purpose with the administrative experiment is promoting the development of the Kainuu region and promote the region's future in line with the region's objectives and compiled resources. The experiment increases regional authority and cooperation between municipalities and other actors. The administrative experiment of two council periods is now midway through; the experiment will end at the end of the year 2012. The highest decision-making of the region has been centralised into one organ, the Joint Authority of the Kainuu Region, consisting of 59 members. It was elected through a direct public election process. A centralised arrangement of basic public services enables securing the service quality, availability and economy in Kainuu in the long term, despite the threatening population forecasts. At the same time, the citizens living in the eight Kainuu municipalities will have equal opportunity to receive basic public services.

The Joint Authority of the Kainuu Region is responsible for social welfare and healthcare services, except for children's day-care. In the education services sector, the Joint Authority of the Kainuu Region is the provider of senior secondary school education, vocational education and vocational adult education.

Furthermore, the Joint Authority of the Kainuu Region is responsible for the general economic policy, and planning and development of the Kainuu region. For the first time, the state budget includes all

funding significant for the development of Kainuu under a single regional autonomous subsection. The region can decide on the allocation of this national development funding and EU funding.

The new operations model challenges the region to find both new innovative solutions and new kind of cooperation methods. In order to survive, the Kainuu region has to be able to utilise all resources of the region as effectively as possible. Kainuu is ready for innovative and profitable cooperation with regional, national and global parties.

Alpo Jokelainen

Executive Director,
Chairman of the Board



Planning and Development

Planning and Development Division

The Planning and Development Division is divided into four spheres of responsibilities: Regional Development, Land Use, Projects and Funding, as well as Communications and Marketing. The division manages general planning and development of the region, and strategic planning of the Joint Authority of the Kainuu Region.

Regional Development

Regional Development Unit is in charge of preparing, maintaining and implementing the Kainuu region's regional plan and regional programme, and of monitoring and forecasting of regional development. Its core tasks also include preparation of the general economic policy, supervision of the region's interests, and supporting the growth and attraction of the region. Regional Development Unit is involved in international cooperation and it is in charge of preparing the EU programmes regarding Kainuu.

Land Use

The most important tasks of Land Use Unit are drawing up a regional land use plan, keeping it up-to-date, and monitoring and developing the plan. Land Use Unit also cooperates with different regions and other authorities in issues included in its sector, and prepares statements regarding land use issues.

Projects and Funding

Projects and Funding Unit prepares the Kainuu regional programme implementation plan and the attached region's cooperation document. Furthermore, the Projects and Funding Unit is in charge of issuing Kainuu development funding proposals to the Ministry of Employment and the Economy together with other authorities. The Projects and Funding Unit also prepares project funding decisions regarding ERDF and ESF programmes of measures, Kainuu development funds, and budgeted funds of the Joint Authority of the Kainuu Region. The Unit takes care of the monitoring of implemented projects and is in charge – in cooperation with the Region of North Karelia and Council of Oulu Region – of the preparation and monitoring of Karelia ENPI CBC programme project decisions.

Communications and Marketing

This Unit is in charge of the region's communications and marketing, as well as promotion of the information society and civil action. The objectives are to improve the region's attraction and the well-being of the residents of Kainuu, promote the implementation of electronic services, and promote the citizen's opportunities to participate and influence in decision-making.

Social and Healthcare Division

The Social and Healthcare Division comprises of the social and healthcare services of Kajaani, Paltamo, Ristijärvi, Kuhmo, Sotkamo, Hyrynsalmi, Puolanka and Suomussalmi, except for children's day-care. The division offers basic healthcare services, special healthcare services and social services.

The division is divided into six units: family services, including services for the handicapped, social services for adults, children, youth and families with children; healthcare services for children, the youth and families with children, including child guidance and family counselling centres and the following basic and special healthcare services: maternity and mother-child clinics, school and student healthcare, gynaecology services, infant and maternal welfare services and obstetric services, paediatrics services, and psychiatric services for children and the youth.

Medical care services include first aid and ambulance services, laboratory, radiology, pathology, pharmaceutical services, equipment services, surgical and anaesthesia services, and intensive care.

Healthcare services include mental health services for adults and addiction treatment services, dental healthcare services, operative treatment, conservative treatment, reception and health centre hospital services, and emergency room services.

The unit's general services include management support, planning and development of the sector, economic and debt counselling, as well as social, patient and war veteran counsel services.

Services for the elderly include home care for the elderly (home care and home service), service housing, family care, long- and short-term institutional care, day-time activities and support services, social services for the elderly, and support for family care of the elderly.

Environmental healthcare services include health monitoring, veterinary services and the environmental healthcare laboratory.

The social and healthcare services have been divided into three levels based on the customer's service needs: services which the residents of Kainuu need almost daily are offered as local services; these include home care services, for example. Services that are needed less often are provided on a regional scale. There are three functional areas in Kainuu: the Kajaani area (Kajaani, Paltamo and Ristijärvi), the Upper Kainuu area (Hyrynsalmi, Puolanka and Suomussalmi) and the Kuhmo-Sotkamo area. Services requiring special expertise that are needed rarely are offered as centralised regional services.

The customers can freely, regardless of their home town, select any treatment point. This freedom of choice refers both to social services and healthcare services. The new operations method secures the availability of services and promotes fluent everyday life of the residents. The Social and Healthcare Division is the largest of the region's divisions. The division employs approximately 2,800 people. The budget of the Social and Healthcare Division comprises almost 80% of the region's total budget. The challenge is finding new operations methods and means to offer as high-class, effective and influential services in a manner that will not compromise the quality of work.



Education Division

The Education Division is in charge of offering upper secondary level vocational education and upper secondary school education. There are approximately 5,700 upper secondary level students each year. The division employs approximately 600 people and the budget is approximately EUR 48 million.

Vocational education is offered by the Kainuu Vocational College (KAO), a municipal enterprise with approximately 4,000 students. The college offers more than thirty training programmes for young people and adults. The adult education unit of KAO, Edukai, is in charge of adult education. Kainuu Vocational College has fixed offices in Kajaani, Kuhmo, Vuokatti, Sotkamo, Suomussalmi, Kuusamo, Vantaa and Estonia. In the past few years, KAO has been awarded good grades in several nation-wide studies both for its functional and economic activities.

The Kainuu Upper Secondary School Unit includes seven upper secondary schools. There are approximately 1,700 upper secondary school students. Schools in Hyrynsalmi, Paltamo, Puolanka and Suomussalmi are filial schools, meaning that they comprise one profit centre and use a shared curriculum. The objective is ensuring the availability and high quality education in whole of Kainuu. There is an upper secondary school of approximately 800 students in Kajaani, including general classes and classes focusing on visual arts and music. It is possible to obtain a vocational degree, participate in adult education or take the matriculation examination in the shared IT and Media Schools of the Kajaani Upper Secondary School and the Kainuu Vocational College. Kuhmo school focuses on teaching music. The special sector of Sotkamo Upper Secondary School is sports, and the school also offers international IB education. It is possible to study two degrees at a time in tourism in Sotkamo.